

2024-2025 School Year

Prime Time

After School Program

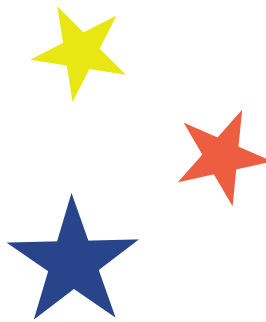
At Cumberland County Schools Prime Time, we pride ourselves in offering children a safe and engaging recreational after school program. Our goal is to help children develop to their fullest potential by focusing on recreation skills, creating friendships, developing feelings of self-worth and more! We hope you'll join us for the 2024-2025 school year!

REGISTER TODAY

www.ezchildtrack.com/ccsprimetime/parent

PROGRAM HIGHLIGHTS

- A daily snack is provided.
- All staff are first aid/CPR certified.
- Prime Time is an NC DCDEE 3-star licensed program.
- We offer a wide range of arts & crafts, science, games, special events and more!
- Homework time is available all day, every day!



PROGRAM FEES

Registration Fee..... \$40/child
After School Care..... \$68/week
All Day Care Weeks... \$100/week
Spring Break Care..... \$100/week

**Individual teacher workdays and early release days are included in the weekly fee.*

**Teacher workday and Spring Break care will be available at alternate locations.*

HOURS OF OPERATION

School Dismissal until 6 p.m.

**Morning care may be available with a minimum enrollment of 15 students by 9/15/24. The weekly cost of the morning program is \$60 or \$78 for both before and after school.*



Prime Time

QUESTIONS?

Please call the
Prime Time Administrative Office
at (910) 678-2451

2024-2025 PRIME TIME LOCATIONS

- Alderman Road Elementary
- Alma Easom Elementary
- Beaver Dam Elementary*
- Ben Martin Elementary
- Bill Hefner Elementary
- C. Wayne Collier Elementary
- Cumberland Mills Elementary*
- E.E. Miller Elementary
- E. Melvin Honeycutt Elementary
- Gallberry Farm Elementary
- Howard Hall Elementary
- Lake Rim Elementary
- Long Hill Elementary
- Loyd Auman Elementary
- Morganton Road Elementary
- New Century Elementary
- Raleigh Road Elementary
- Rockfish Elementary
- Stoney Point Elementary
- Vanstory Hills Elementary
- Warrenwood Elementary*
- W.H. Owen Elementary

*Morning care is not available at this time.



ADDITIONAL LOCATIONS SERVED

- 71st Middle SchoolEscorted to Loyd Auman Elementary
- Brentwood Elementary Bused to Loyd Auman (PM Only)
- John Griffin Middle SchoolEscorted to E. Melvin Honeycutt Elementary
- Montclair Elementary Bused to W.H. Owen Elementary (PM Only)
- New Century Middle SchoolEscorted to New Century Elementary

**Please call the
Prime Time Administrative Office with questions.
(910) 678-2451**

