



**SALAS O'BRIEN**

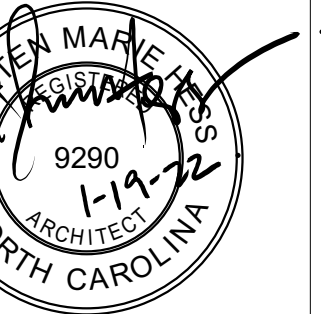
1620 Midtown Place  
Raleigh, NC 27609  
919-832-8118  
salasobrien.com  
license (NC): F-1434



**ARCHITECTURE**

1100 Dresser Court  
Raleigh, NC 27609  
Office 919.828.2301  
Email office@hh-arch.com

**GRAY'S CREEK ELEMENTARY SCHOOL HVAC  
& WINDOW REPLACEMENT  
CUMBERLAND COUNTY SCHOOLS**  
2964 School Rd  
Hope Mills, NC 28348



Project Number:  
21-102

Date:  
12/23/2021

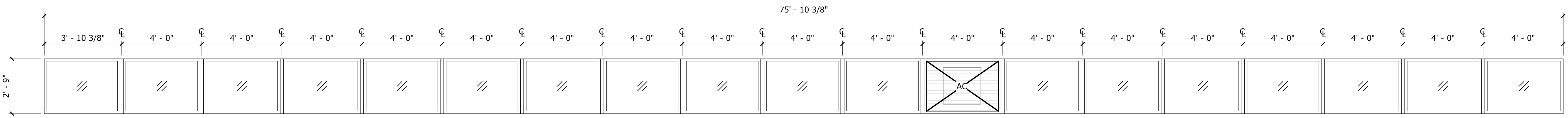
Designed by: AD      Checked by: DC

Revisions:  
1 | ADDENDUM #1 | 01/19/22

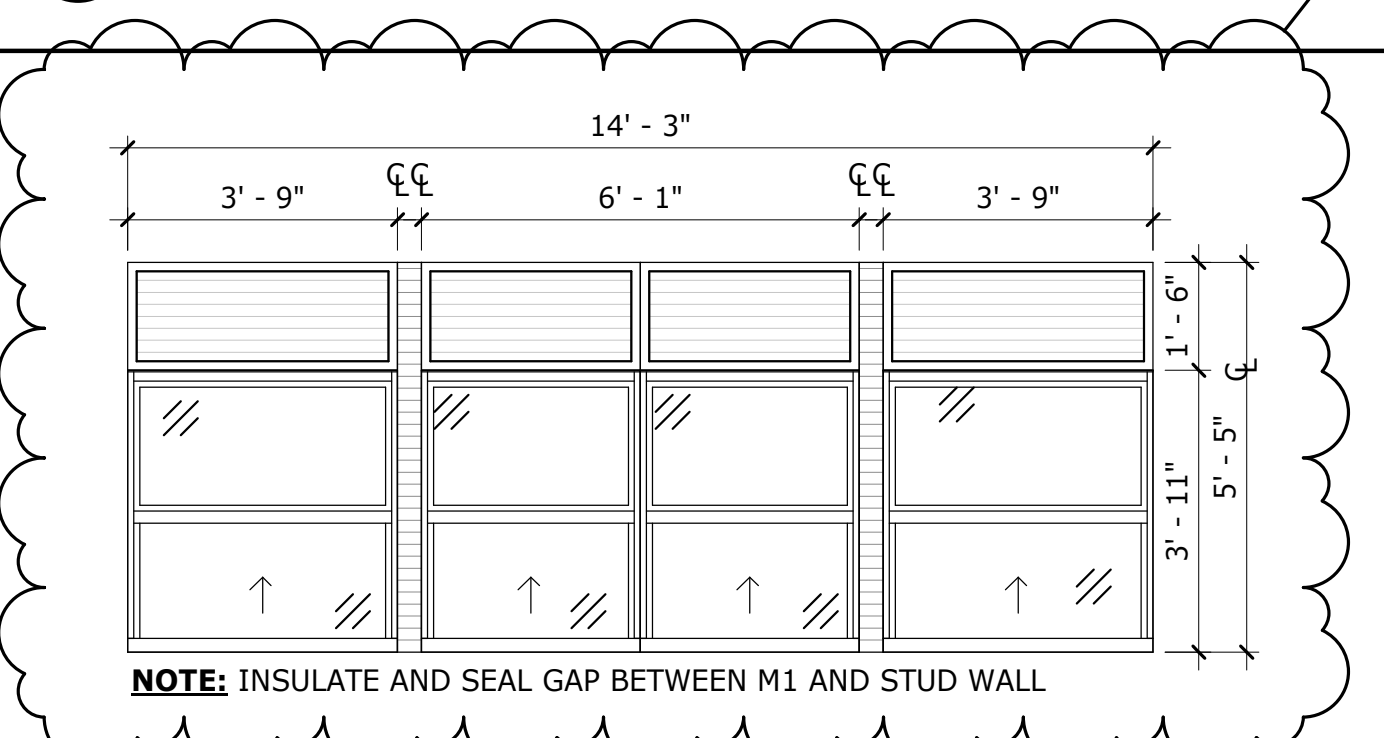
Sheet Title:  
**GRAY'S CREEK  
ES FLOOR PLAN**

Sheet Number:  
**A111**

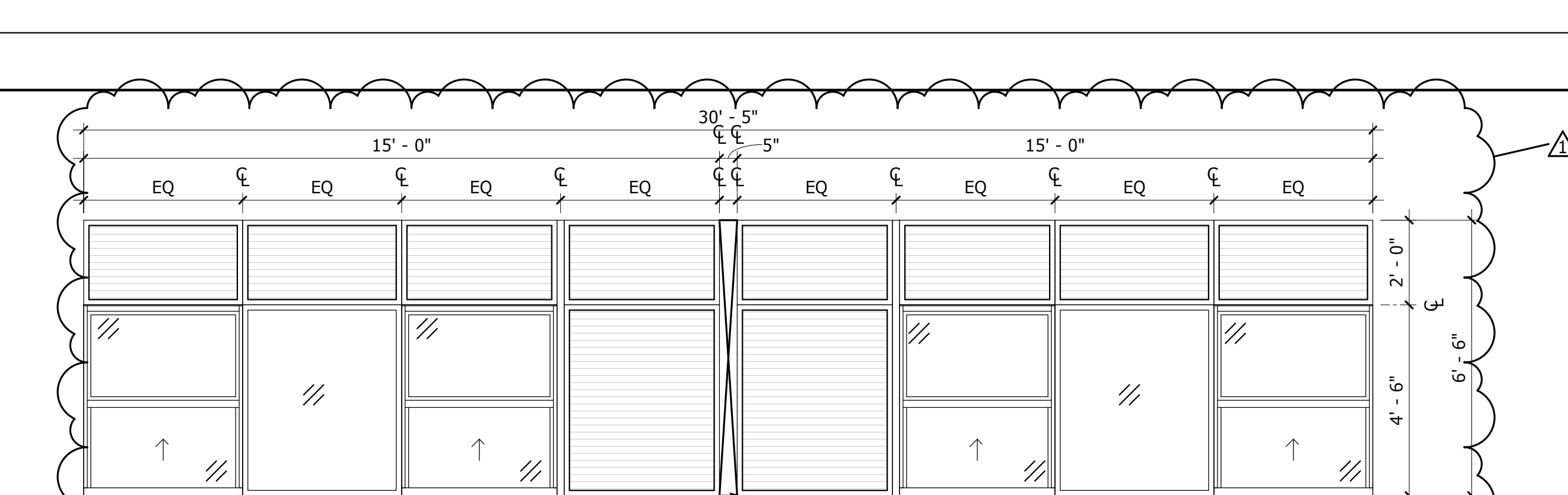
Copyright © 2021 Salas Obrien  
50 Project No.



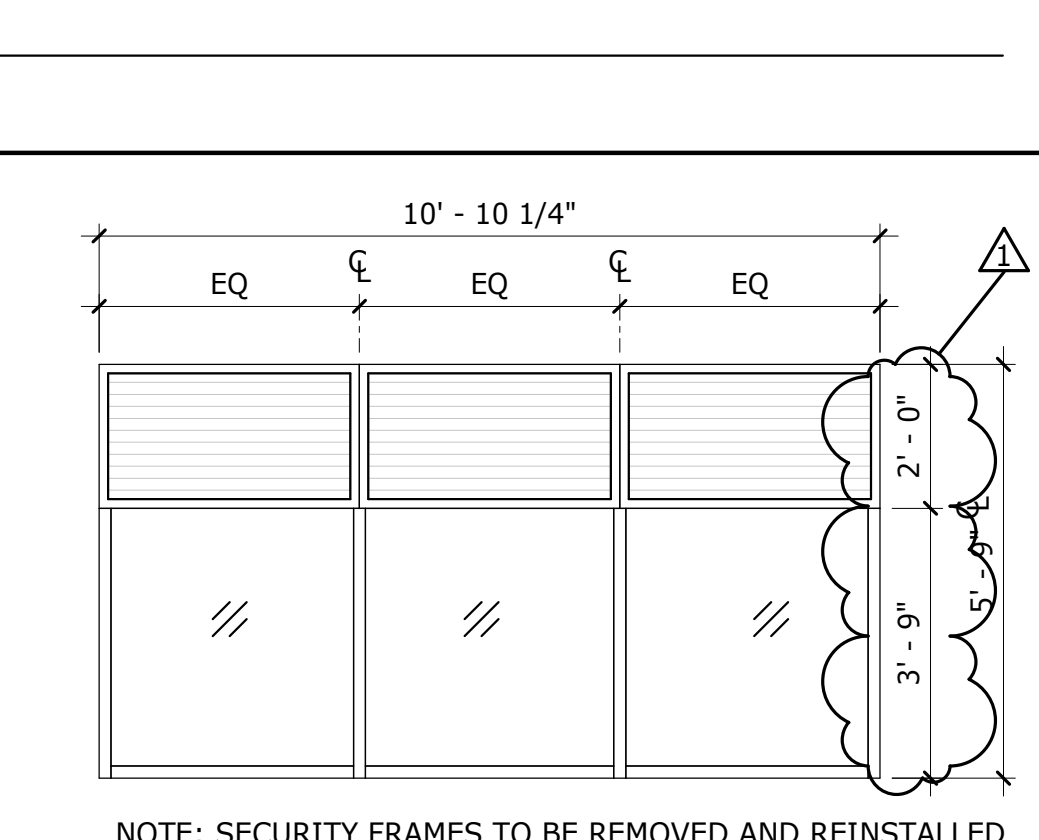
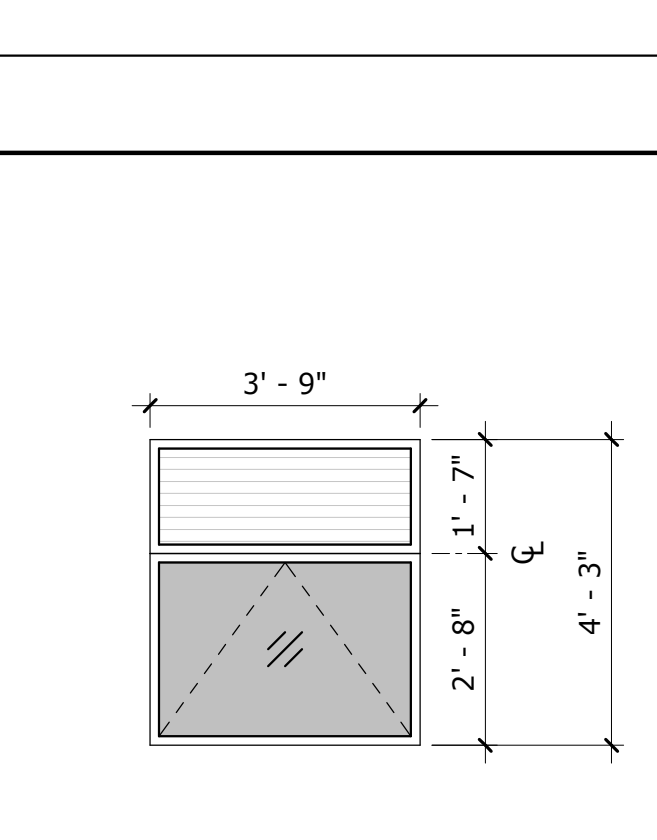
**01 WINDOW A (x2)**  
A111 3/8" = 1'-0"



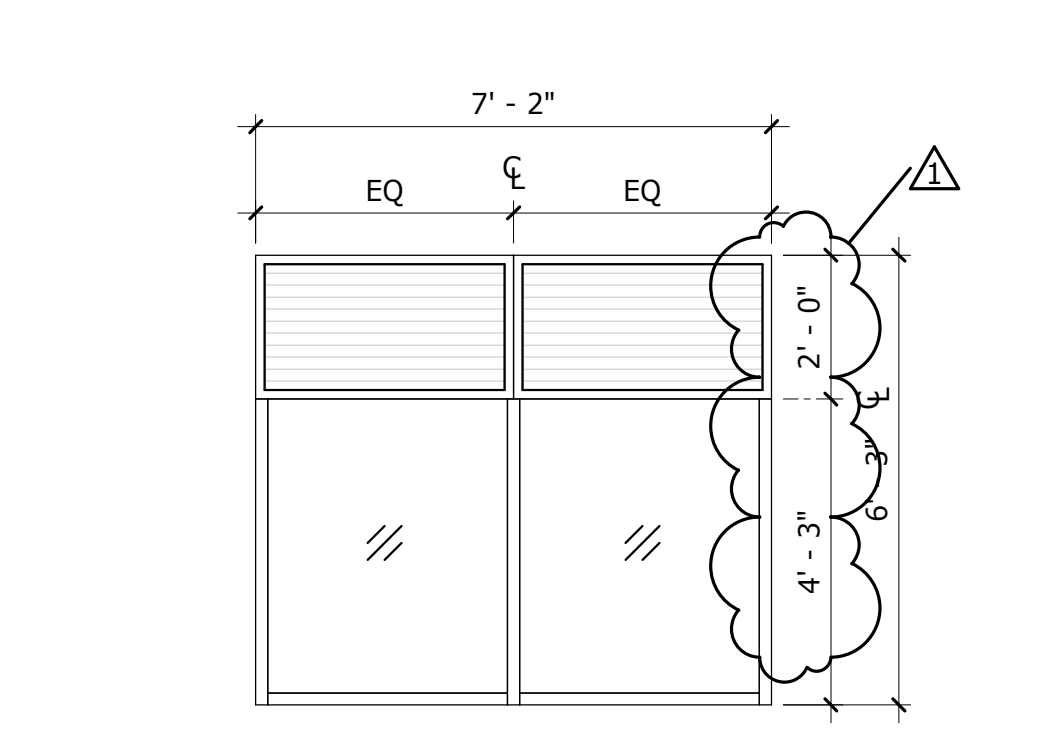
**02 WINDOW B (x2)**  
A111 3/8" = 1'-0"



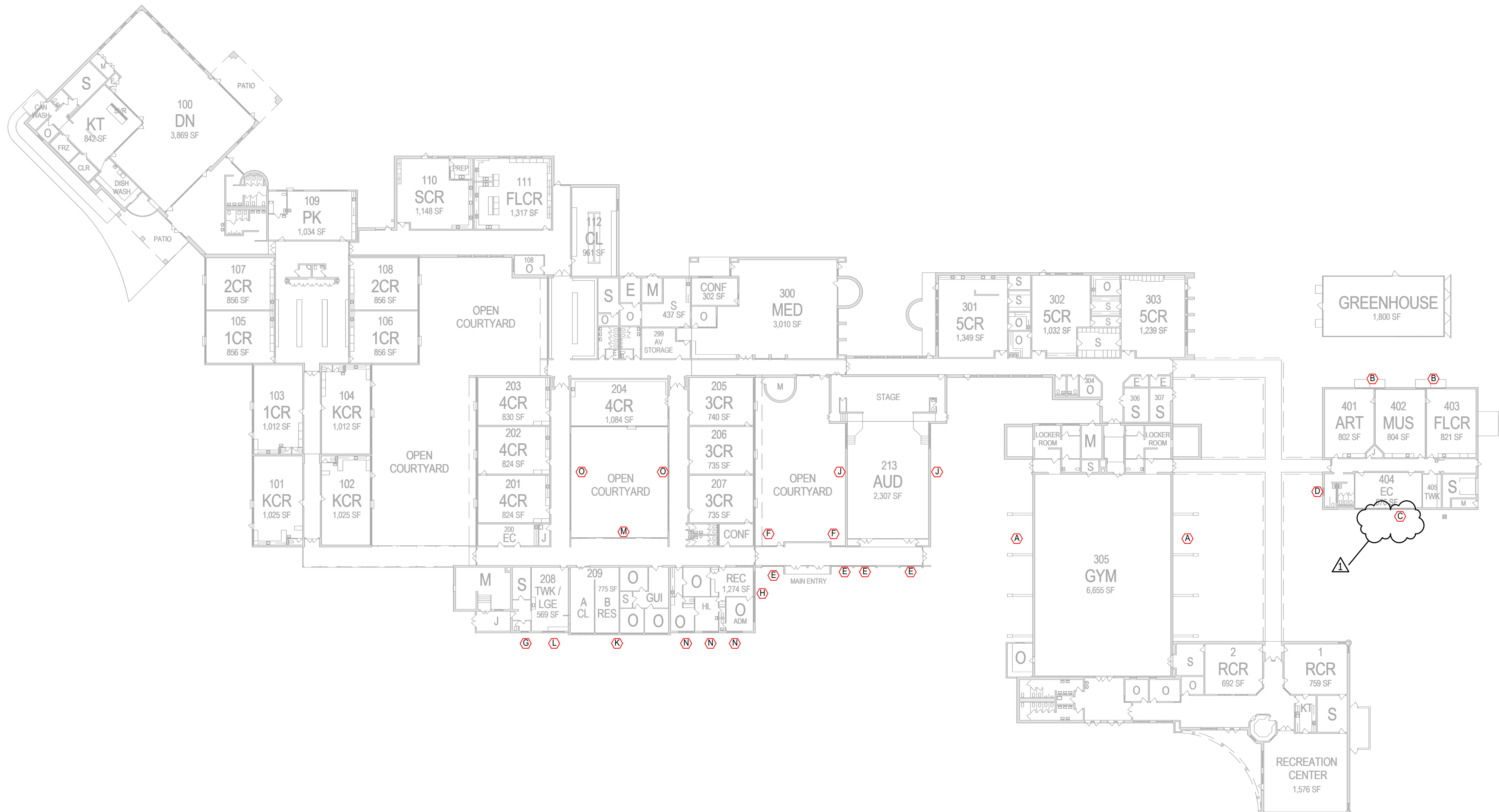
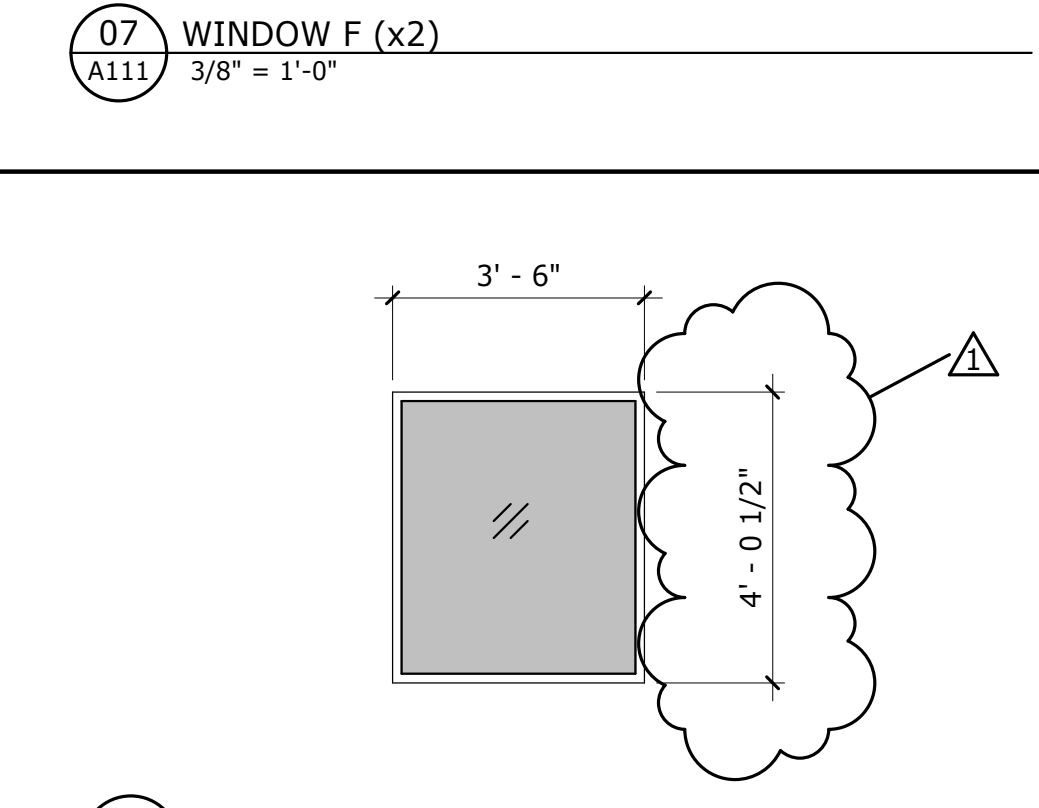
**03 WINDOW C (x1)**  
A111 3/8" = 1'-0"



**05 WINDOW E (x4)**  
A111 3/8" = 1'-0"



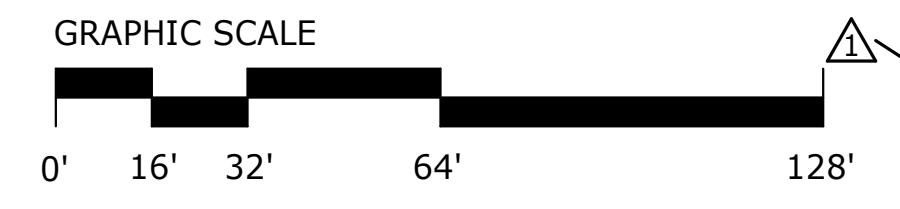
**08 WINDOW G (x1)**  
A111 3/8" = 1'-0"



**ELEVATION LEGEND**

- GLAZING PANEL (G1) BASE BID  
OBSCURED GLASS (G2) - ALT. 1
- OBSCURED GLASS (G2)
- METAL PANEL INFILL (M1)
- SINGLE-HUNG EMERGENCY ESCAPE AND RESCUE OPENING**  
MIN CLEAR WIDTH: 20-inch  
MIN CLEAR HEIGHT: 24-inch  
MIN. NET CLEAR OPENING: 60-square inches  
BOTTOM OF CLEAR OPENING: 32 inches AFF MAX

**NOTE:**  
GLAZING TEMPERED WHERE REQUIRED BY CODE.



**06 GRAY'S CREEK ES FLOOR PLAN**  
A111 1/32" = 1'-0"